

Pioneer Valley Weavers

NEWS 2023 Guild Table



About Pioneer Valley Weavers

We are a guild of over 40 weavers united by our common fascination with the interlacement of fibers. Some of us are just beginning to enjoy weaving, others range from proficient to master level, and a few are professional weavers or teachers. Several of us are at the loom every day while others struggle to find small bits of time in which to weave. We weave on large looms in separate rooms devoted just to weaving and small looms on the kitchen table. We gather to encourage and learn from each other. Guests are welcome to attend one or two meetings before they join.

Regular meetings are normally held the second Tuesday of September through June, at WEBS, Service Center Road, Northampton, MA. (413-584-2225). Social time begins at 6:00 PM. The business meeting begins at 6:30 PM and the speaker/program at 7:00 PM.

We love new members. Join us!

PVW Guild Exhibit

While members were allowed to enter any recent piece, we also encouraged entries from our guild color challenge. Members in this study group worked on pieces with three or more colors to extend their understanding of color and its interactions in various weaving structures. Drafts for the study group were to be chosen from Davison (1977) *A Handweaver's Pattern Book* or Strickler (1991) *A Weaver's Book of 8-Shaft Patterns: From the Friends of Handwoven*.

To Join PVW

Dues are \$30.00, which includes monthly programs from September through June, access to PVW's vast library, discounted workshop fees, access to loaner looms, and our newsletter. Please complete the printed membership form at the front of this notebook or found online at:

<https://pioneervalleyweavers.org/>

and mail your check, made payable to Pioneer Valley Weavers, to:

Peggy Wolff, Membership Chair
126 Cave Hill Road
Leverett MA 01054

Program

The 2022-2023 program included a card weaving mini-workshop (Pat Kapitsky), the Marshfield School of Weaving's North American Handloom Survey and its revelations regarding the nature of weaving in New England (Nevan Carling), setts (Susan Conover, Zoom), tour of the weaving yarns and the weaving room at WEBS with demonstration of looms, weaving tools, and accessories (Barbara Elkins and Mary Jones), review of "The Fabric of Civilization" by Virginia Postrel (Scott Norris), warping back to front vs. front to back, rigid heddle looms (Marthe Young), and a 2-day on-loom lace weaves workshop (Laurie Autio).

The 2023-2024 program will include making bags (Trish Colson), designing summer and winter (Jill Staubitz), profile drafting (Deb Essen, Zoom), rug weaving (Stephanie Morton, Zoom), using limits to your advantage (Emily Gwynn), Hartford Artisans Weaving Center (Mary Roche), using scraps and thrums, several mini-workshops, and a 3-day on-line workshop on explorations in extended parallel threadings (Denise Kovnat, Zoom).

Officers 2023-2024

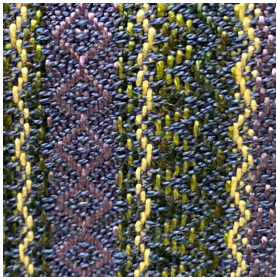
Chair: Nina Laurie
VP and Program: Barbara Elkins
Secretary: Sarah Cooper
Treasurer: Nancy Evans
Newsletter: Deb Adamczyk
Librarian: Carol Birtwistle

Table of Contents



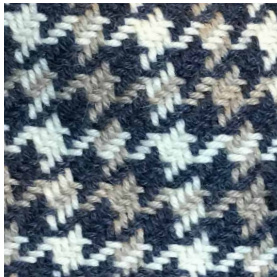
Deb Adamczyk

4-5 Twill Baby Blanket



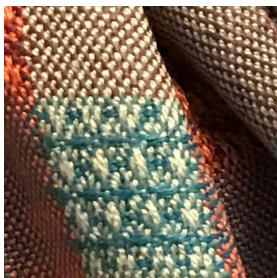
Barbara Elkins

6-7 Twill Scarf



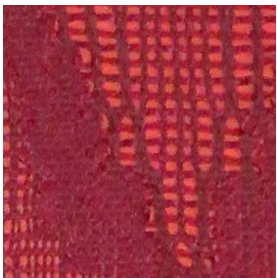
Grace Ferrante

8-9 Twill Scarf



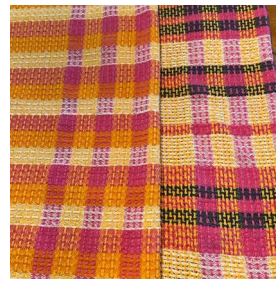
Lynn Field

10-11 Twill Scarf
12-13 Waffle Scarves
14-15 Parallel Twill Scarf



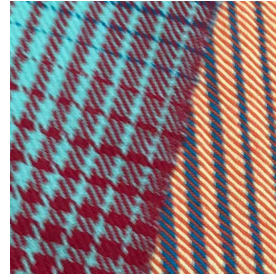
Georgia Hadley

16-17 Leno Wall Hanging



Nina Laurie

18-19 Huck Towel Set
20-21 Twill Towel Set



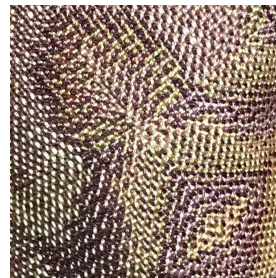
Naomi London

22-23 Twill Towel Set



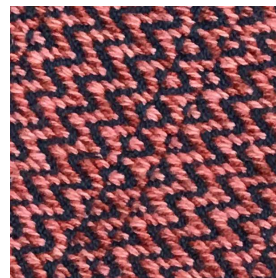
Jodi Nager

24-25 Undulating Twill Scarf



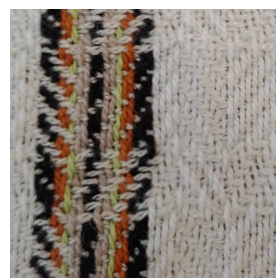
Vicki Patillo

26-27 Undulating Twill Scarf
28-29 Summer and Winter Towel



Diane Roeder

30-31 Herringbone Twill Towel



Sharon Schenna

32-33 Twill Blocks Runner
34-35 Twill Shawl

Deb Adamczyk

Aiden's Baby Blanket

Structure: 4-shaft straight twill threading with point treadling, regular 2/2 tie-up.

Draft Source: Traditional, Marguerite Porter Davison (1947) A Handweaver's Pattern Book, p. 13.

Warp: 8/2 unmercerized cotton, baby blue, baby pink, mint green, bright yellow; 24 epi.

Weft: 8/2 unmercerized cotton, baby blue, baby pink, mint green, bright yellow; 24 ppi.

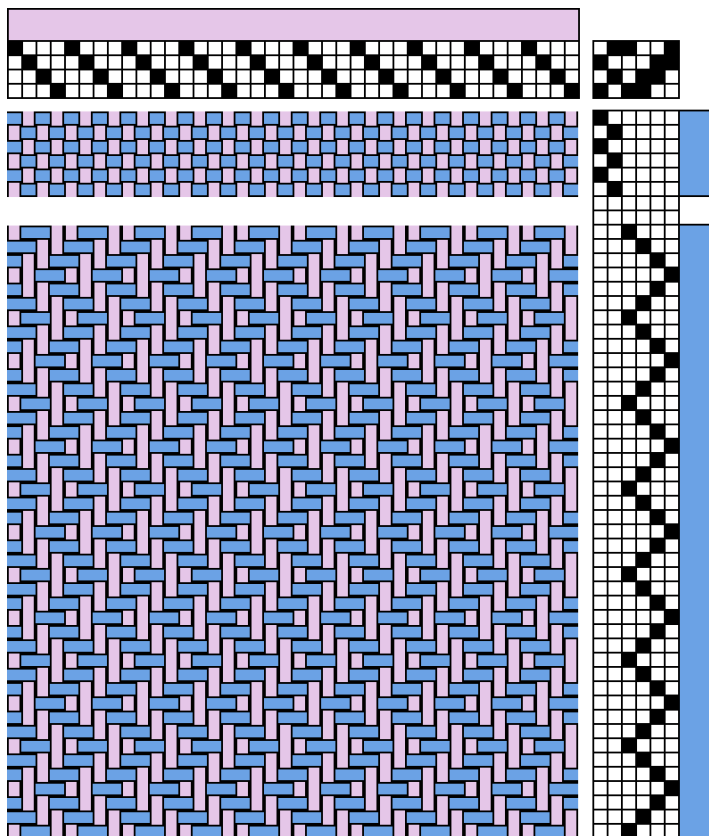
Design Notes: Finished with a satin blanket binding because babies like fondling the satin edge.

Warp Color Sequence

Blue	97 ends
Yellow	48 ends
Green	48 ends
Pink	96 ends
Blue	288 ends
Pink	96 ends
Green	48 ends
Yellow	48 ends
Blue	97 ends

Weft Color Sequence

Blue	1.5"	plain weave
Blue	4.25"	twill
Yellow	2"	twill
Green	2"	twill
Pink	4"	twill
Blue	20.5"	twill
Pink	4"	twill
Green	2"	twill
Yellow	2"	twill
Blue	4.25"	twill
Blue	1.5"	plain weave





Barbara Elkins

Scarf

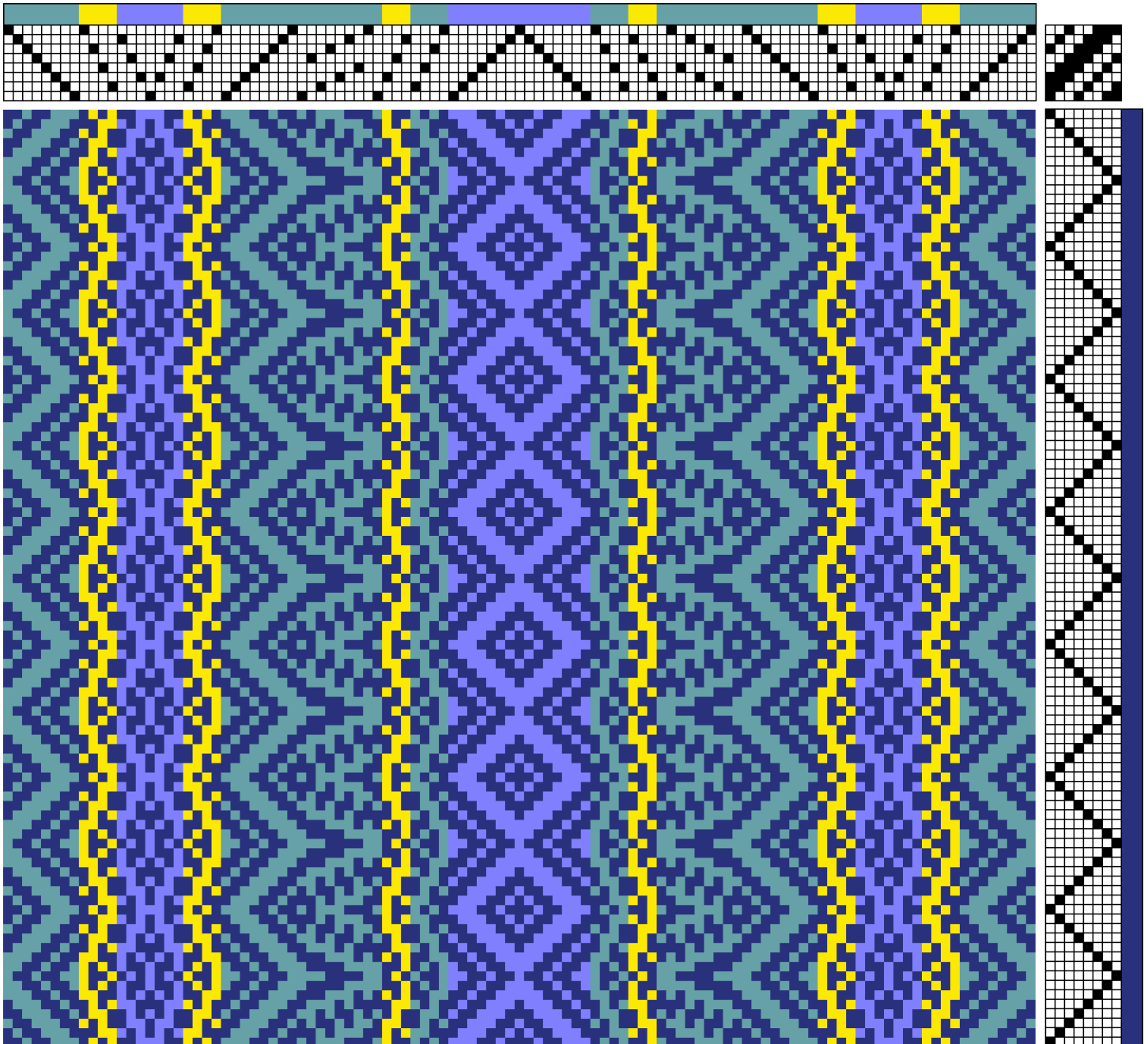
Structure: 8-shaft snowflake twill with point treadling, regular 3/2/1/2 tie-up.

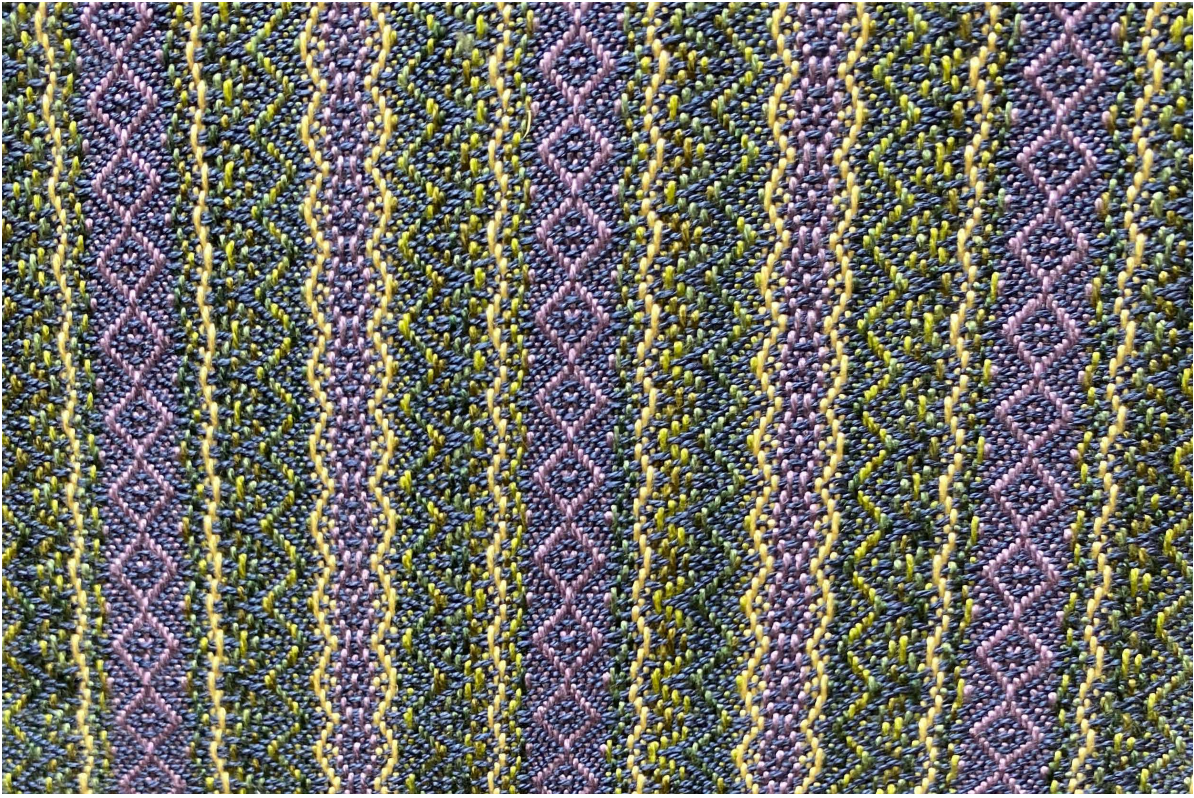
Draft Source: Carol Strickler, ed. (1991) *A Weaver's Book of 8-Shaft Patterns: From the Friends of Handwoven*. #728 by Joan McCulloch (from Margaret Windeknecht, 1987, *The Rosepath Motif*, p.48), page 228.

Warp: 8/2 Tencel, tonal green, yellow, and hummingbird; 27 epi.

Weft: 8/2 Tencel, navy; 27 ppi.

Design Notes: Inspired by the color of summer flowers. Made for January 22 guild meeting, NEWS table, and then to sell for charity donation.





Grace Ferrante

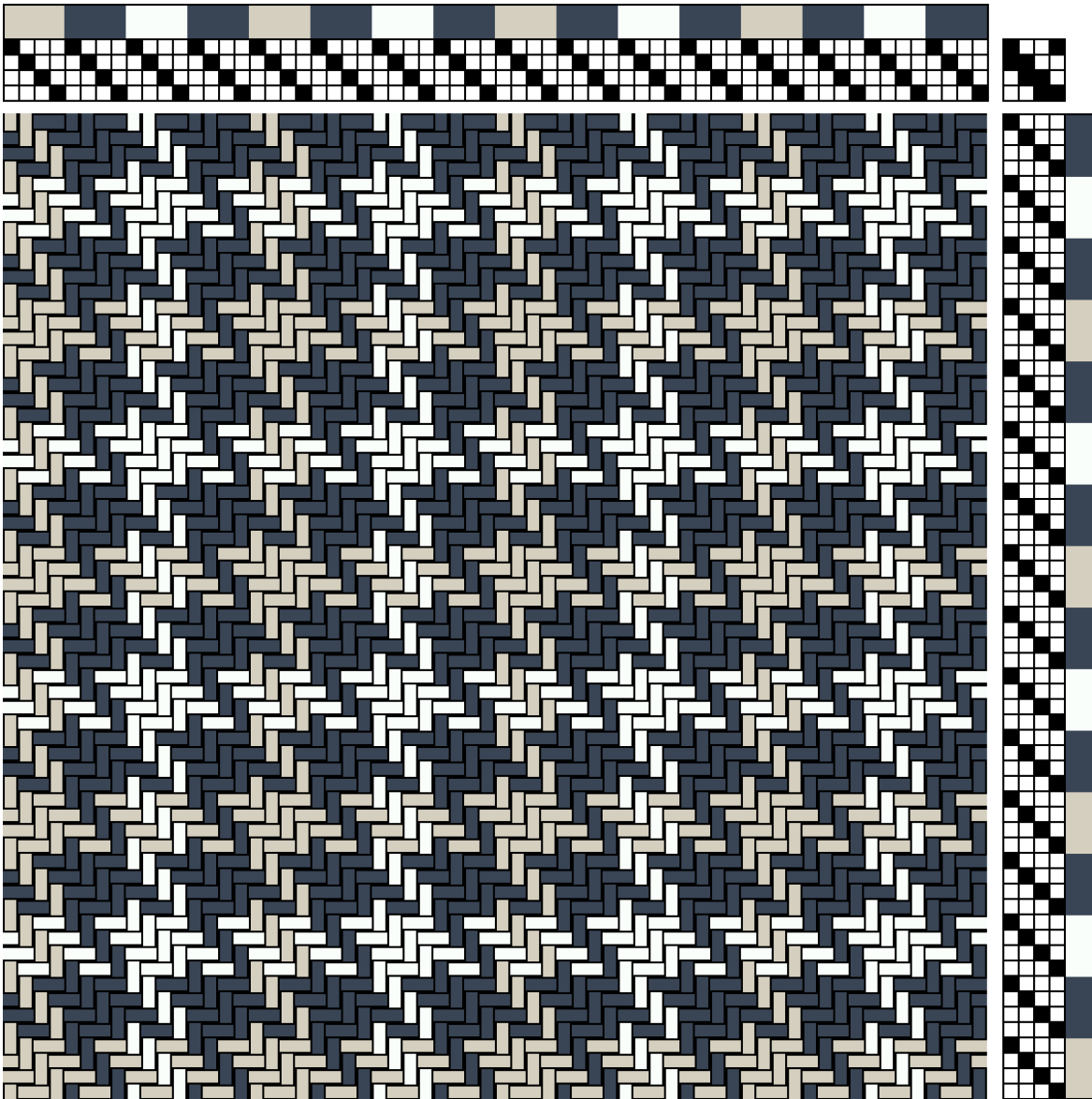
Scarf

Structure: 4-shaft straight twill, regular 2/2 tie-up, with color-and-weave effects (check or houndstooth).

Draft Source: Ivo Kastanek (1903) A Manual of Weave Construction. Handweaving.net #52657.

Warp: 4/9 Ode Alpaca (1118 ypp), teal, cream and tan; 10 epi.

Weft: 4/9 Ode Alpaca, teal, cream and tan; 10 ppi.





Lynn Field Scarf

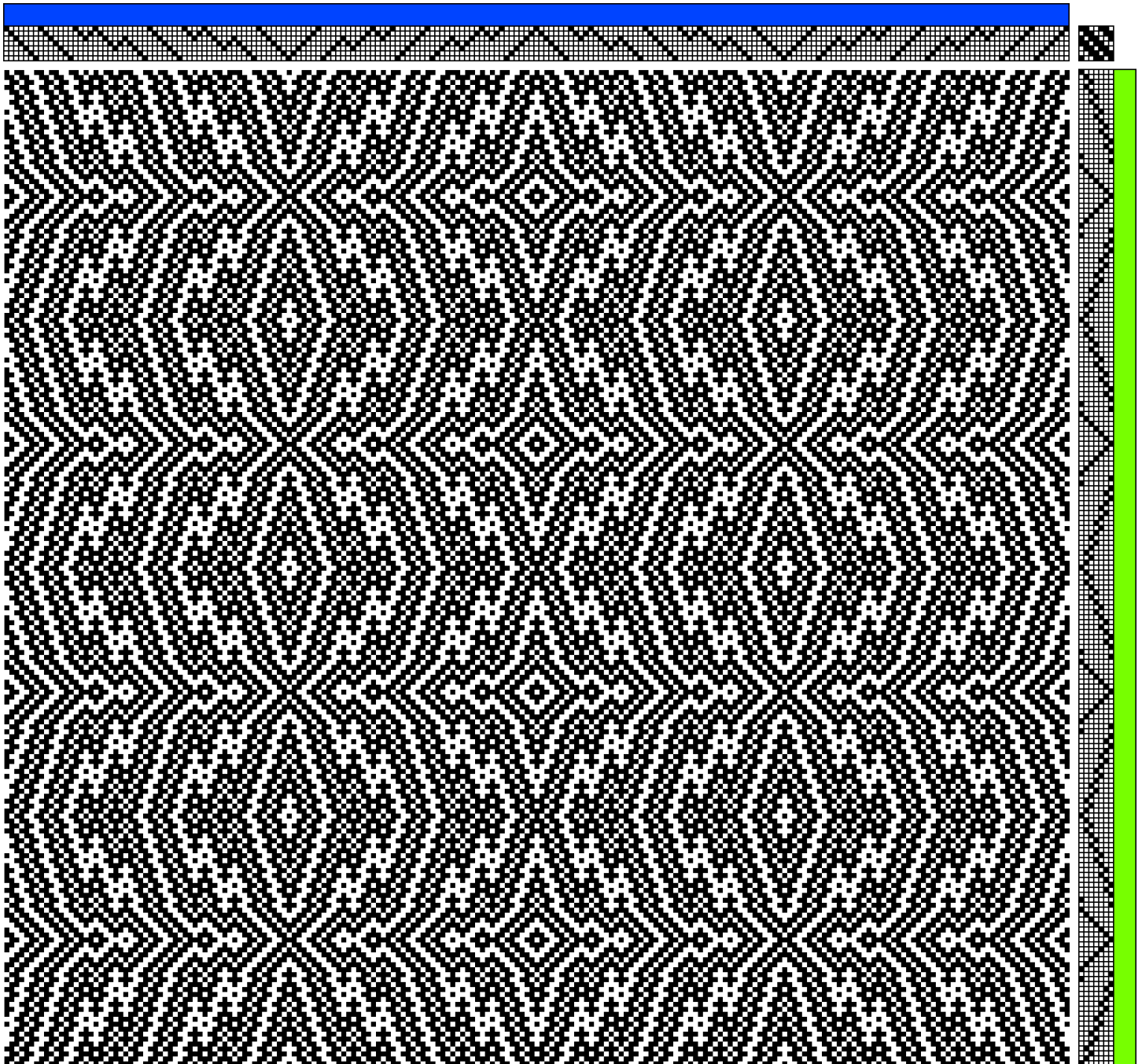
Structure: 8-shaft point twill variant.

Draft Source: Original, modified from a Pinterest draft.

Warp: 8/2 Tencel, variegated heliotrope; 27 epi.

Weft: 8/2 Tencel, lemon grass; 27 ppi.

The blue stands for the variegated warp.





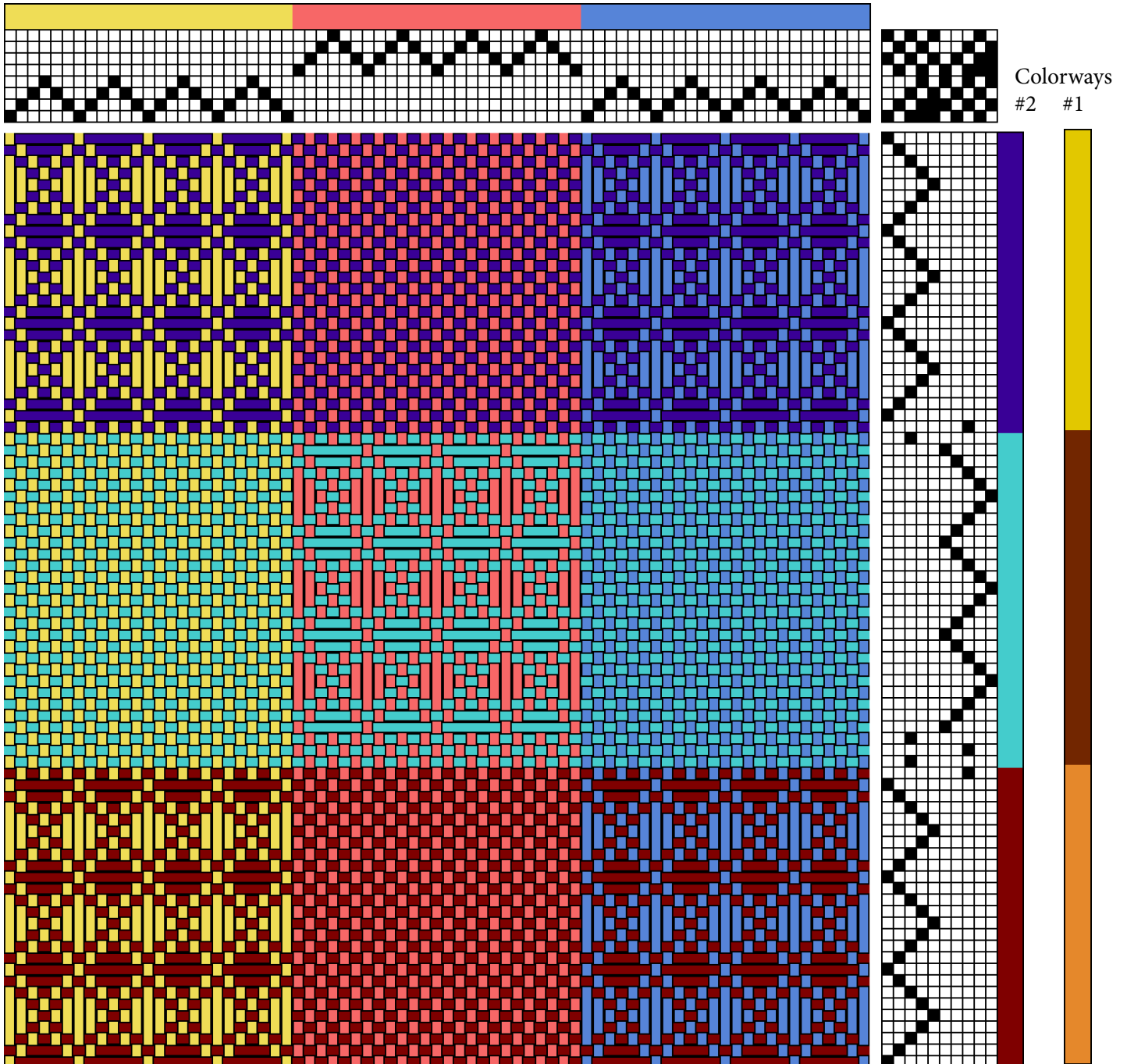
Lynn Field Scarf

Structure: 2-block 8-shaft waffle weave and plain weave.

Draft Source: Carol Strickler, ed. (1991) *A Weaver's Book of 8-Shaft Patterns: From the Friends of Handwoven*. #519 by Susan E. J. White, p. 144.

Warp: 8/2 rayon, blue; 8/2 tencel, coral; 8/2 bamboo, yellow; 24 epi.

Weft: 8/2 tencel, #1 gold, pompeii, and orange; #2 grape, aquamarine, and eggplant; 24 ppi.





Lynn Field Scarf

Structure: 8-shaft parallel undulating twill.

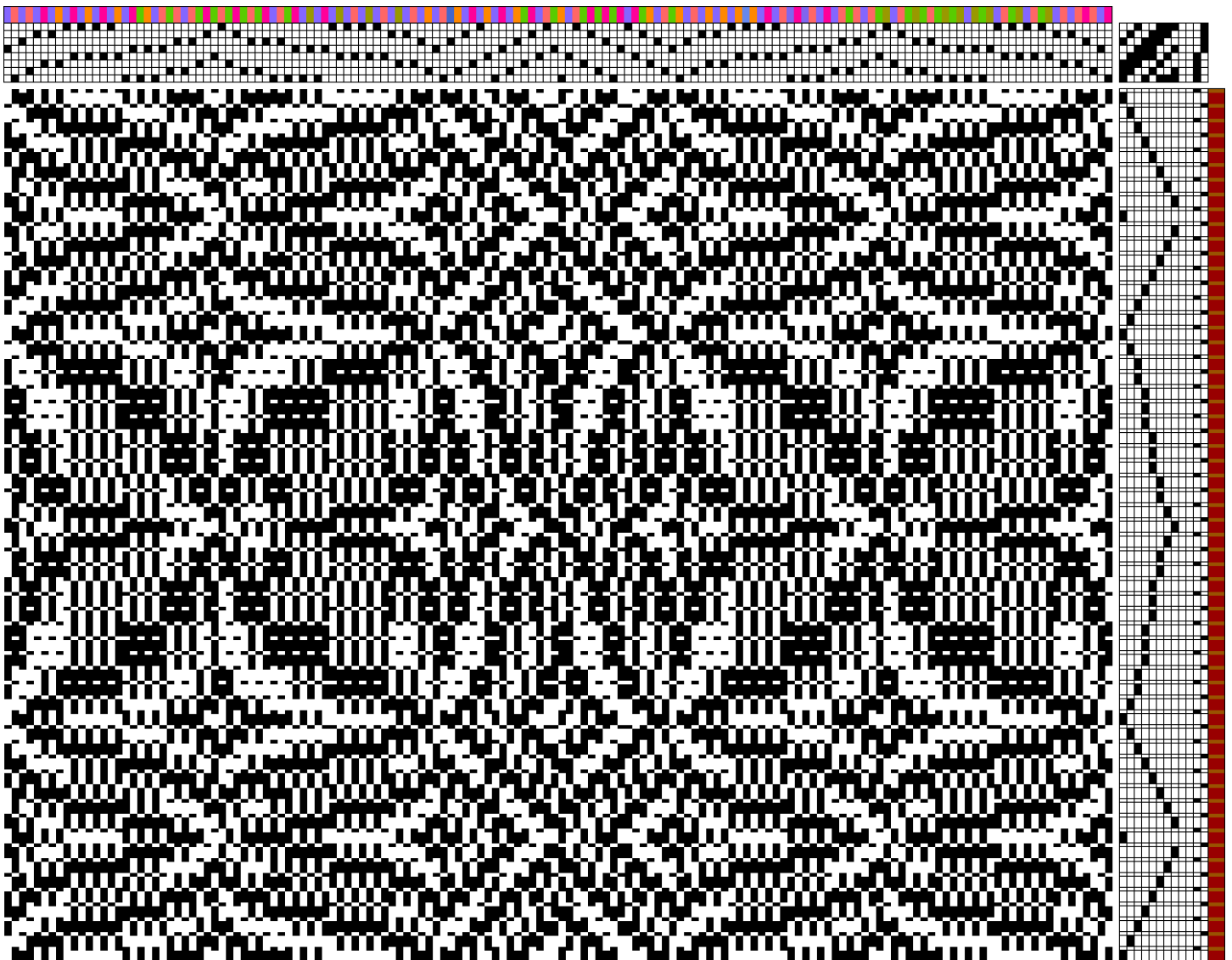
Draft source: Original, based on a design line from Judie Eatough and Wanda Shelp, eds. (2000) *Complex Weavers Greatest Hits: In Celebration of 21 Years*. Design line taken from 8-block profile draft by Bernice Myers, p.72.

Warp: 8/2 rayon, two hand dyed warp chains, one in warm colors and one in cool colors threaded in parallel; 28 epi.

Weft 20/2 silk, brown pattern and 60/2 silk, light brown tabby; 28 ppi.

Design Notes: Bernice's draft was a profile for 8 blocks. Lynn used it as a design line, making a parallel threading with an interval of 4. The tie-up was adjusted to add shaft 4 on treadle 5. Minor adjustments made to the pattern treadling: 12345678, 1, 87654321, 2, 33, 444, 555, 66, 787, 66, 555, 444, 33, 2 and reverse. It is woven with a tabby of shafts 1 to 4 against 5 to 8.

The draft warp colors are a stand-in for the actual variegated yarns.





Georgia Hadley

Wall Hanging

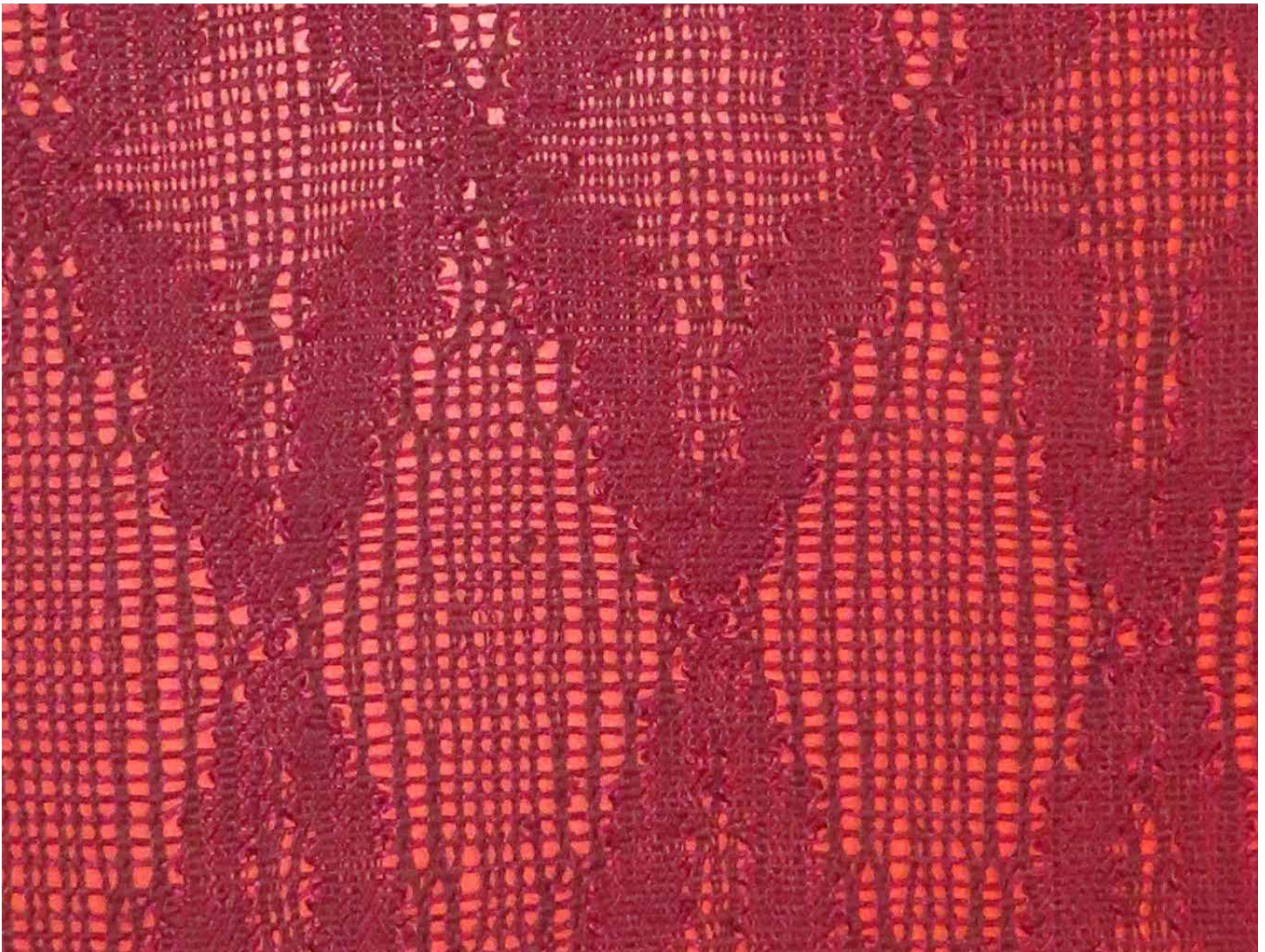
Structure: Hand-controlled leno and plain weave.

Design Source: Original.

Warp: 20/2 mercerized cotton, maroon; 32 epi.

Weft: Cotton floss, red; 32 ppi (plain weave).

Design Notes: Changing the number of threads in the leno crossovers changes the degree of openness in the lace areas. The curves caused by the different types of leno add to the organic, less regular feel of the design. While this piece was woven with a symmetric top and bottom, Georgia decided to mount it with the wide border only at the bottom.





Nina Laurie

Towel Set

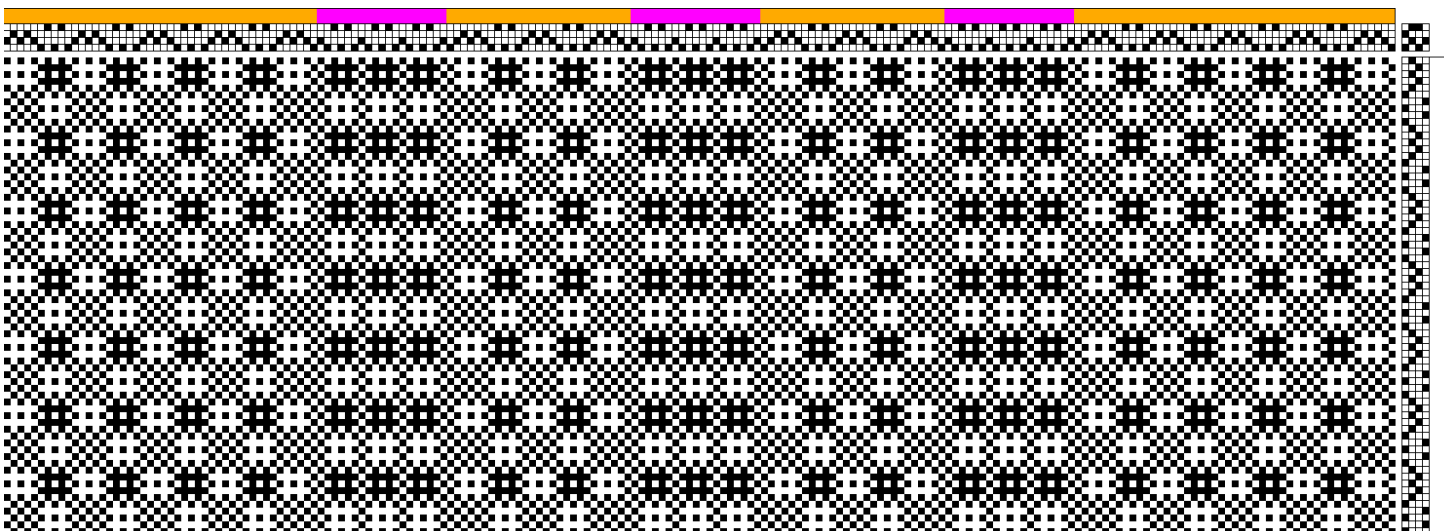
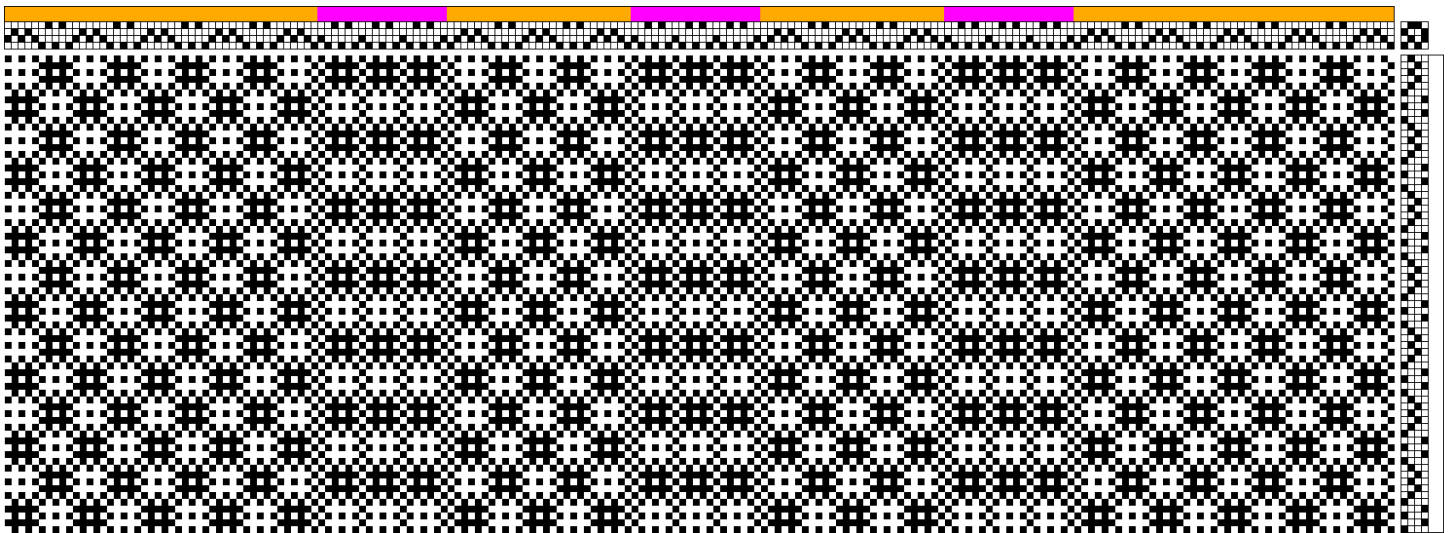
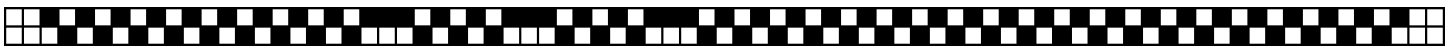
Structure: 4-shaft Swedish lace, two tie-ups.

Draft Source: Original.

Warp: 8/2 cotton, magenta and orange; 20 epi.

Weft: 8/2 cotton, black, magenta, and white (lace); orange, magenta, and white (boxes and columns); 20 ppi.

Top, Profile draft for threading.
Middle, Portion of lace threading draft.
Bottom, Portion of boxes and columns
threading draft.





Nina Laurie

Towel Set

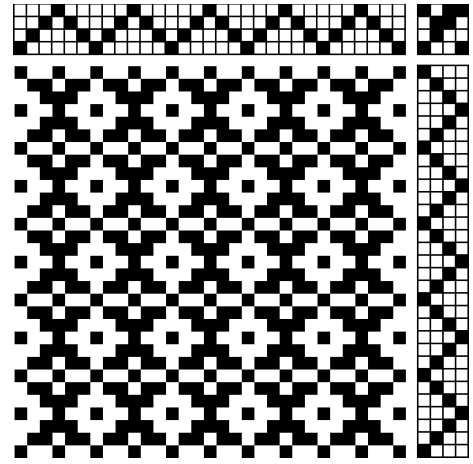
Structure: 4-shaft point twill, rosepath tie-up.

Draft Source: Original.

Warp: 8/2 cotton, black, light green, and tan; 20 epi.

Weft: 8/2 cotton, black plus blue, mustard (draft shown), or rust; 20 ppi.

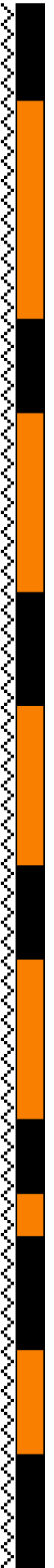
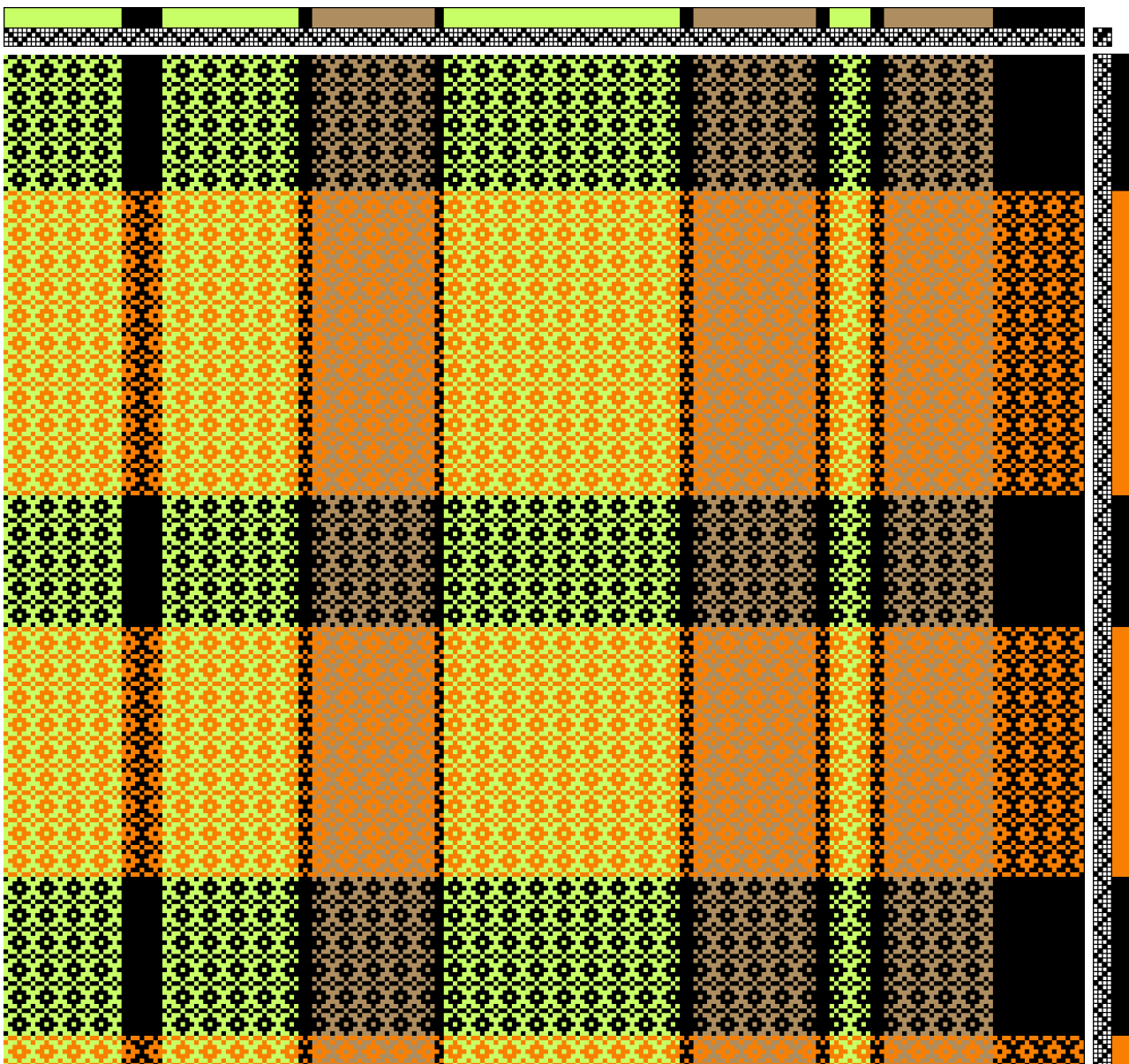
Design Note: Different weft colors along with black illustrate bold and subtle complimentary and contrasting effects in a plaid arrangement.



Above, Structural view.

Right, One treadling color sequence.

Below, Upper right portion of full draft.



Naomi London

Towel Set

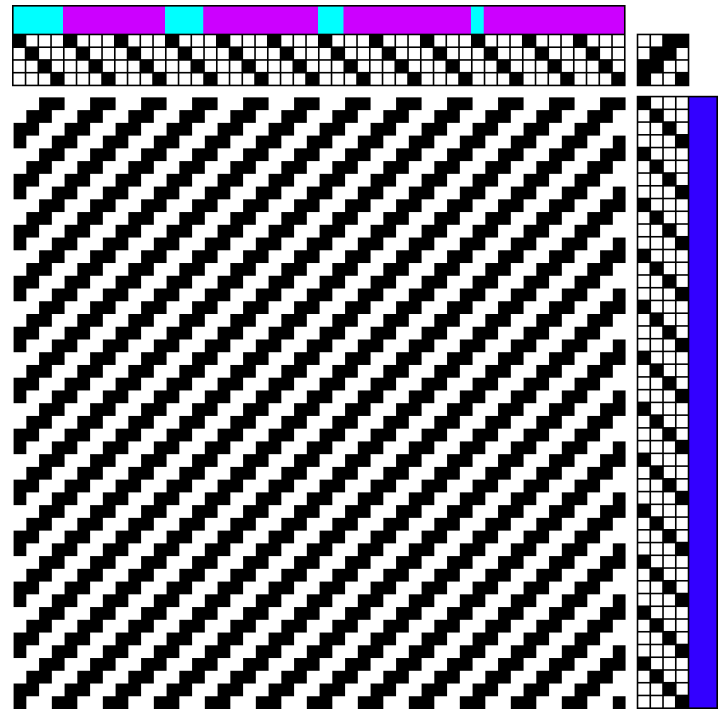
Structure: 4-shaft straight twill, regular 2/2 tie-up.

Draft Source: Traditional, see Anne Dixon (2007) *The Handweaver's Pattern Directory: Over 600 Weaves for 4-shaft Looms*, p. 29.

Warp: 8/2 cotolin, various colors; 27 epi (sleyed 22221 in a 15 dpi reed).

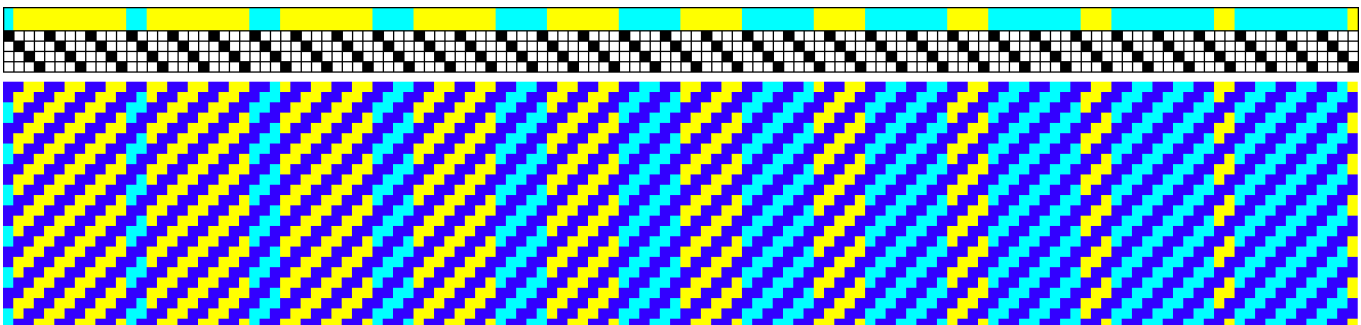
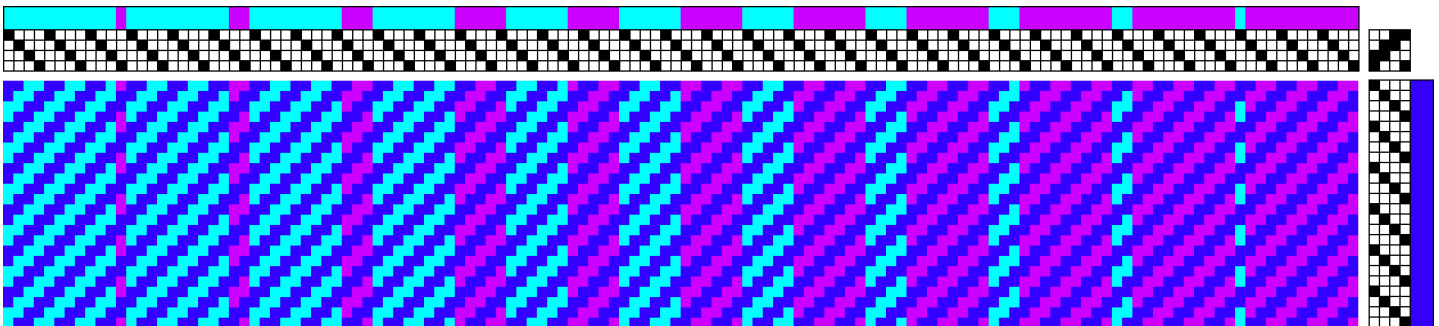
Weft: 8/2 cotolin, various colors; 27ppi.

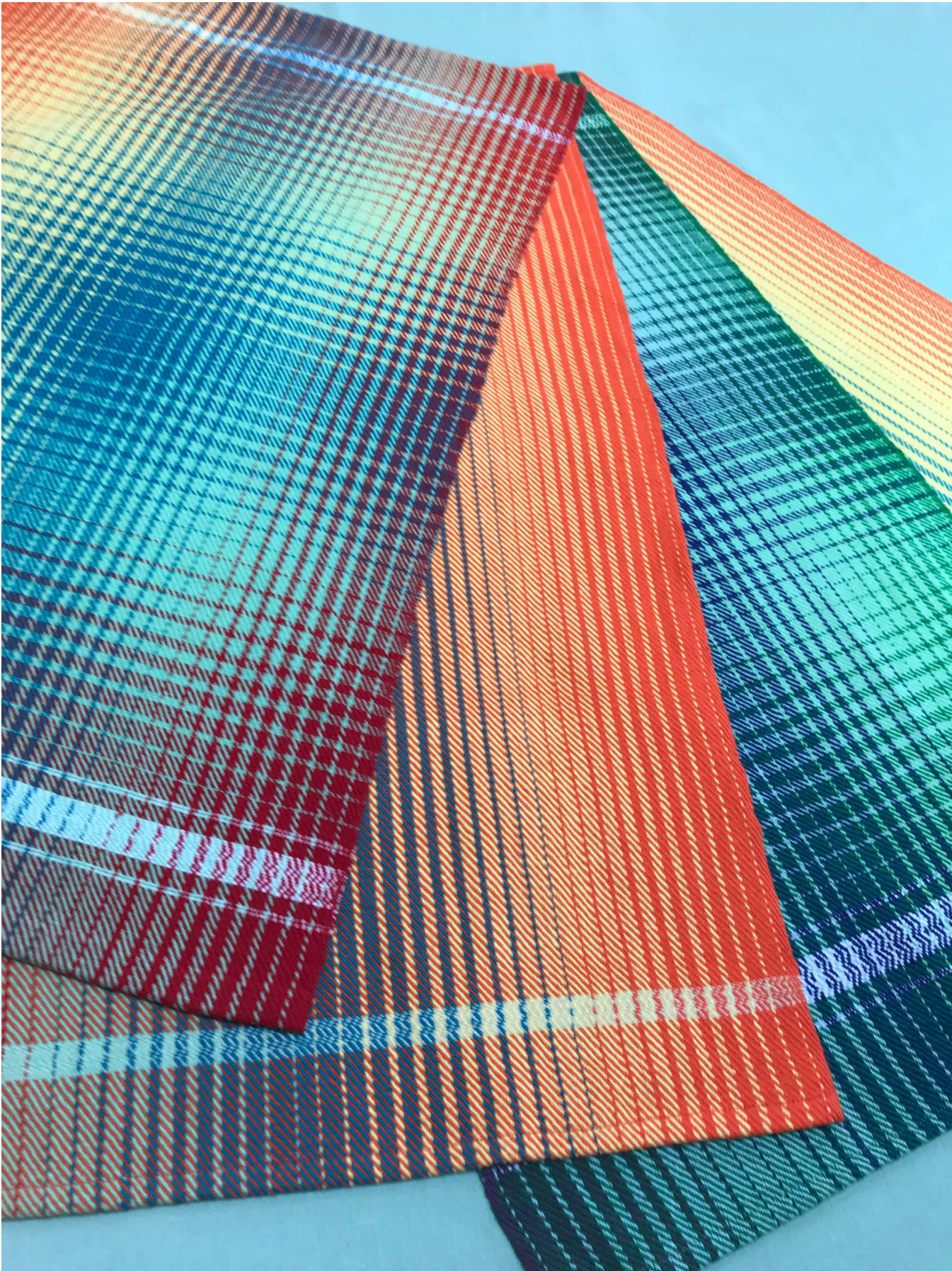
Design Notes: Umbre, also called ombré, shadowing, or bi-directional shading, is a method of gradually decreasing the number of ends of one color and increasing the ends of another color, resulting in blending from one color to the next. Naomi chose to alternate light and dark colors to increase the contrast. The warp is in 12 end segments. Starting with 11 ends of color A and 1 end of color B, 10A-2B, 9A-3B; 8A-4B; until 1A-11B; at which point color A is dropped and Color C is introduced with 1C-11B; 2C-10B; 3C-9B, etc.



Above, Structure draft.

Below, A portion of one of the the threading drafts showing how the colors change gradually in 12-thread sections.





Jodi Nager

Scarf

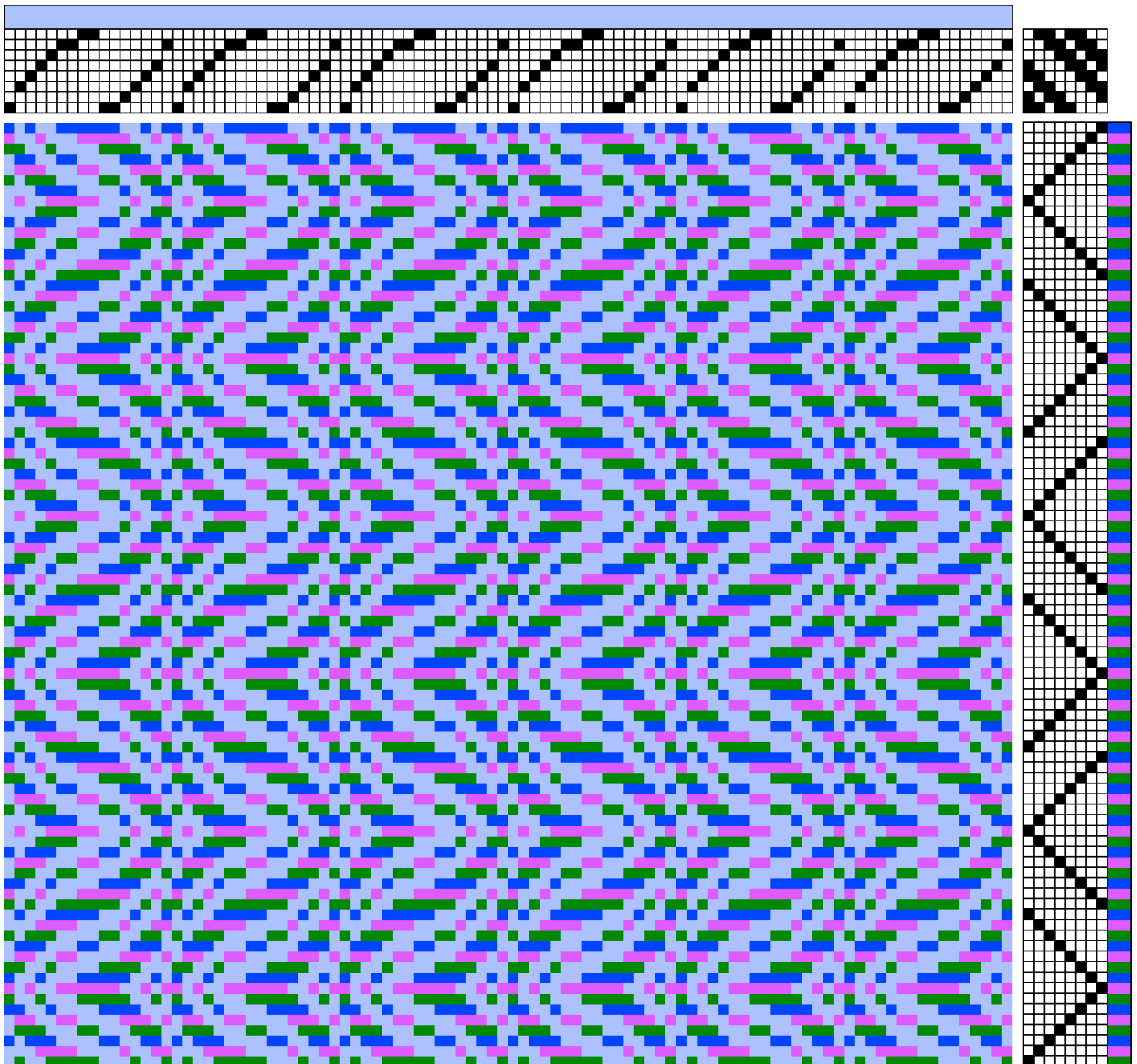
Structure: 8-shaft undulating twill, regular 2/1/2/3 tie-up.

Warp: 8/2 Tencel, light blue; 24 epi.

Draft Source: Carol Strickler, ed. (1991) *A Weaver's Book of 8-Shaft Patterns: From the Friends of Handwoven*. #219 by Joan Jensen, Judy Kleeves, and Trudy Johnson, p. 52.

Weft: 8/2 Tencel, hand dyed variegation in shades of pinks, blues, and greens; 24 ppi.

The draft weft colors are a stand-in for the actual variegated yarn.





Vicki Patillo

Scarf

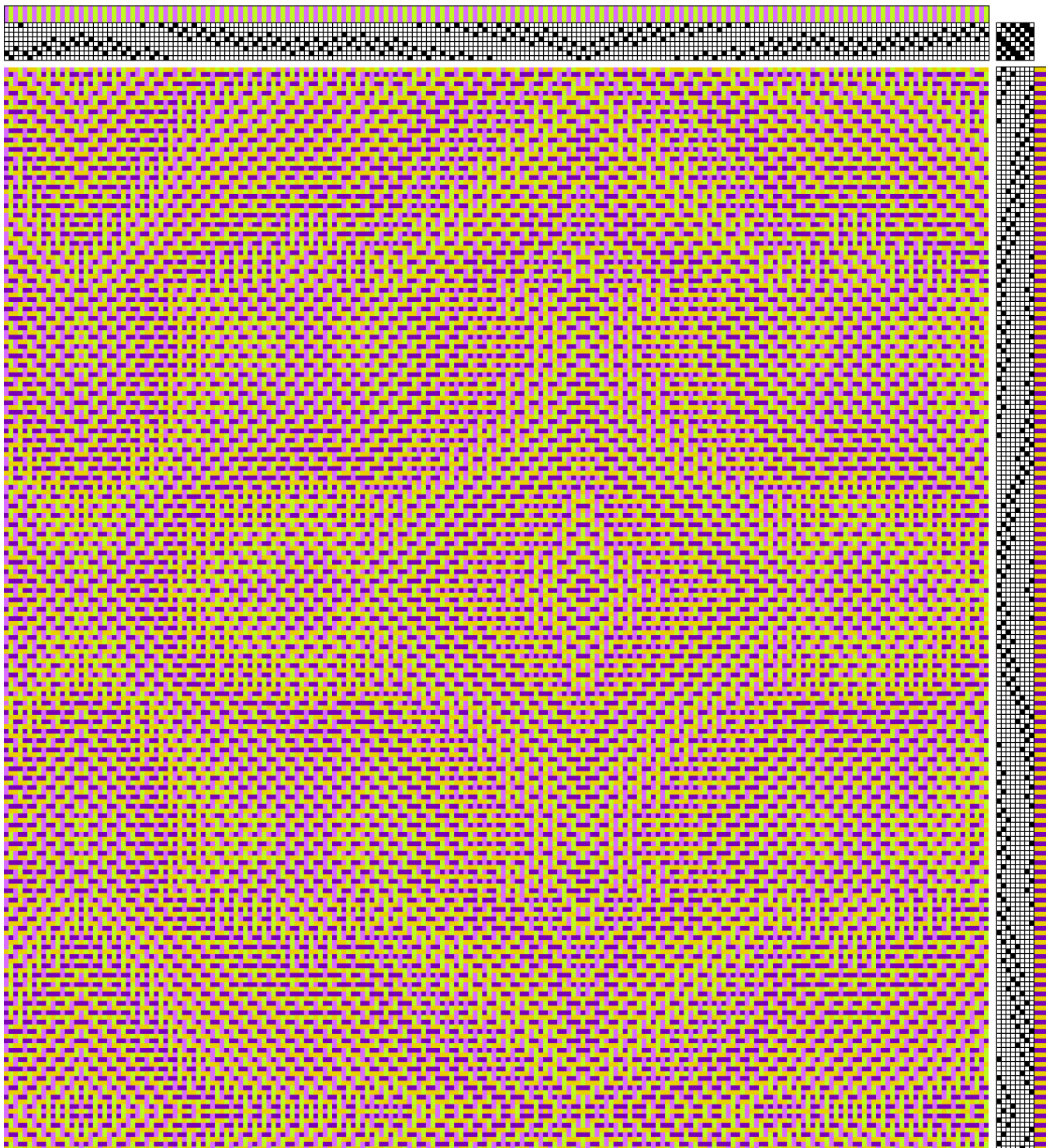
Structure: 8-shaft parallel twill, regular 2/2/1/1/1/1 tie-up.

Draft Source: Janna van Ledden-Valk (2021) Janna Weaves. "Oriental Green one + two 8 shafts." p. 74.

Warp: 10/2 rayon, hand dyed in various colors of yellow, lime, reds, and purple mixed with 10/2 Tencel in light purple; 30 epi.

Weft: 8/2 Tencel, dark purple and quadrupled 60/2 silk, gold; 34 ppi.

Upper right portion of draft. The draft colors stand in for the more complex hand dyed yarn colors.





Vicki Patillo

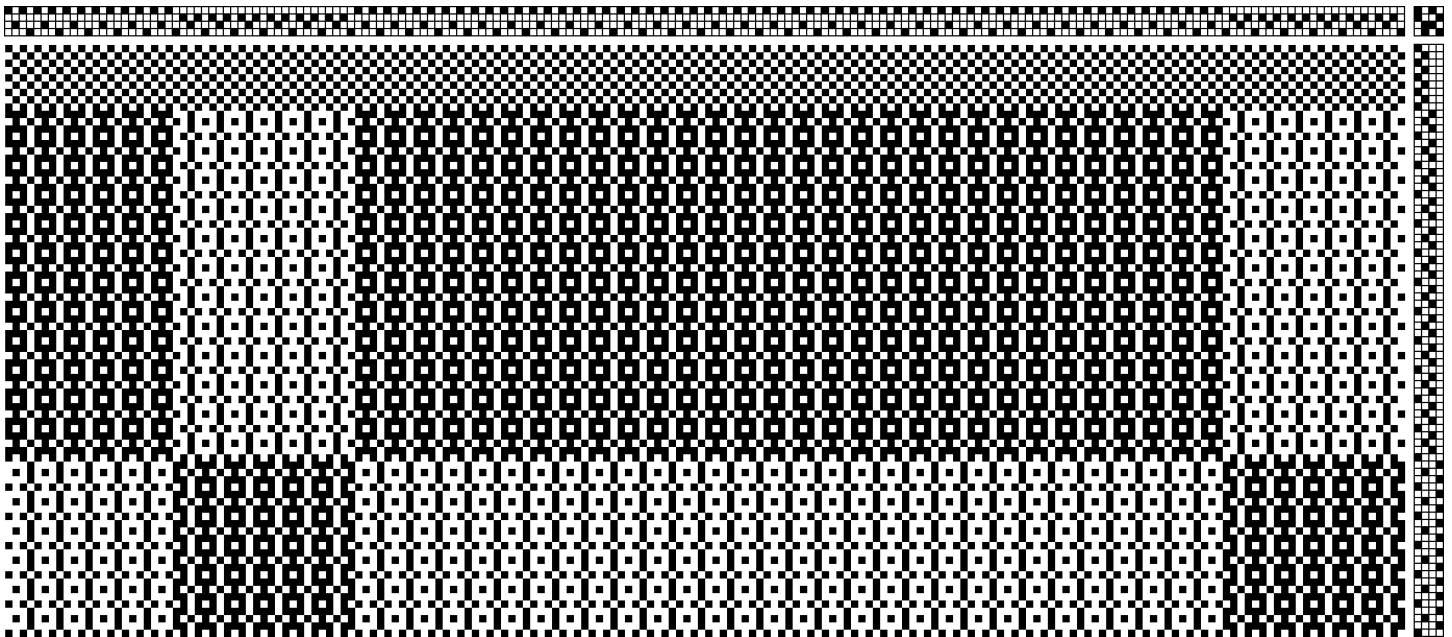
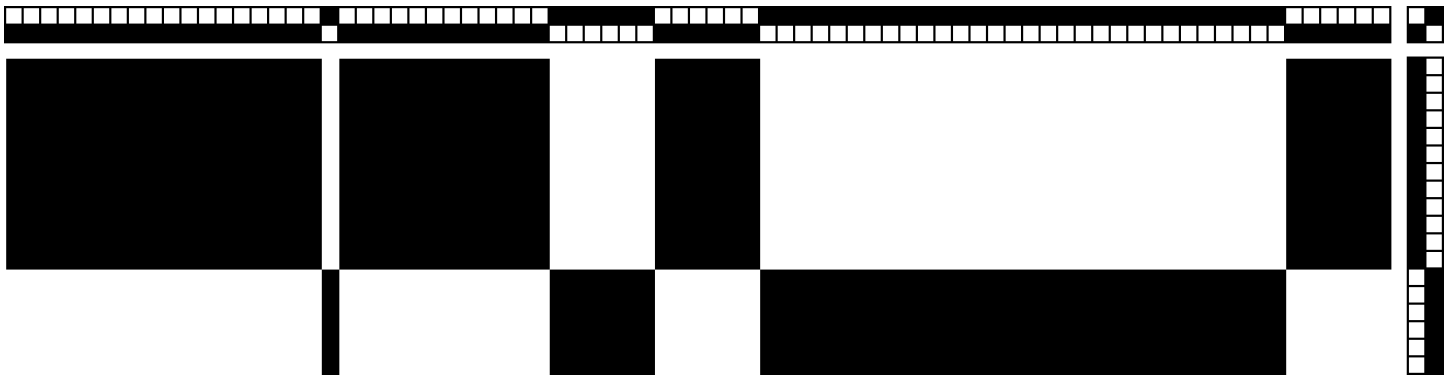
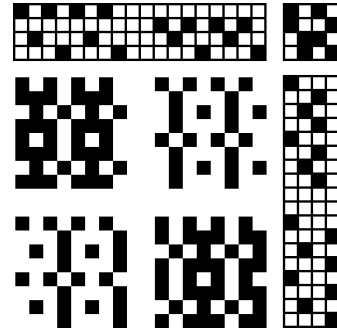
Towel Set

Structure: 4-shaft summer and winter.

Draft Source: Christine Novotny (March/April 2021)
"Bauhaus Weaver Hand Towels." Handwoven, p. 51.

Warp: 8/2 cotton, cream, turquoise, brown and black; 20 epi.

Weft: 8/2 cotton, cream, turquoise, brown and black; 40 ppi.



Top right, Profile key showing two of each block.

Middle, Profile draft.

Bottom, Portion of threading draft.



Diane Roeder

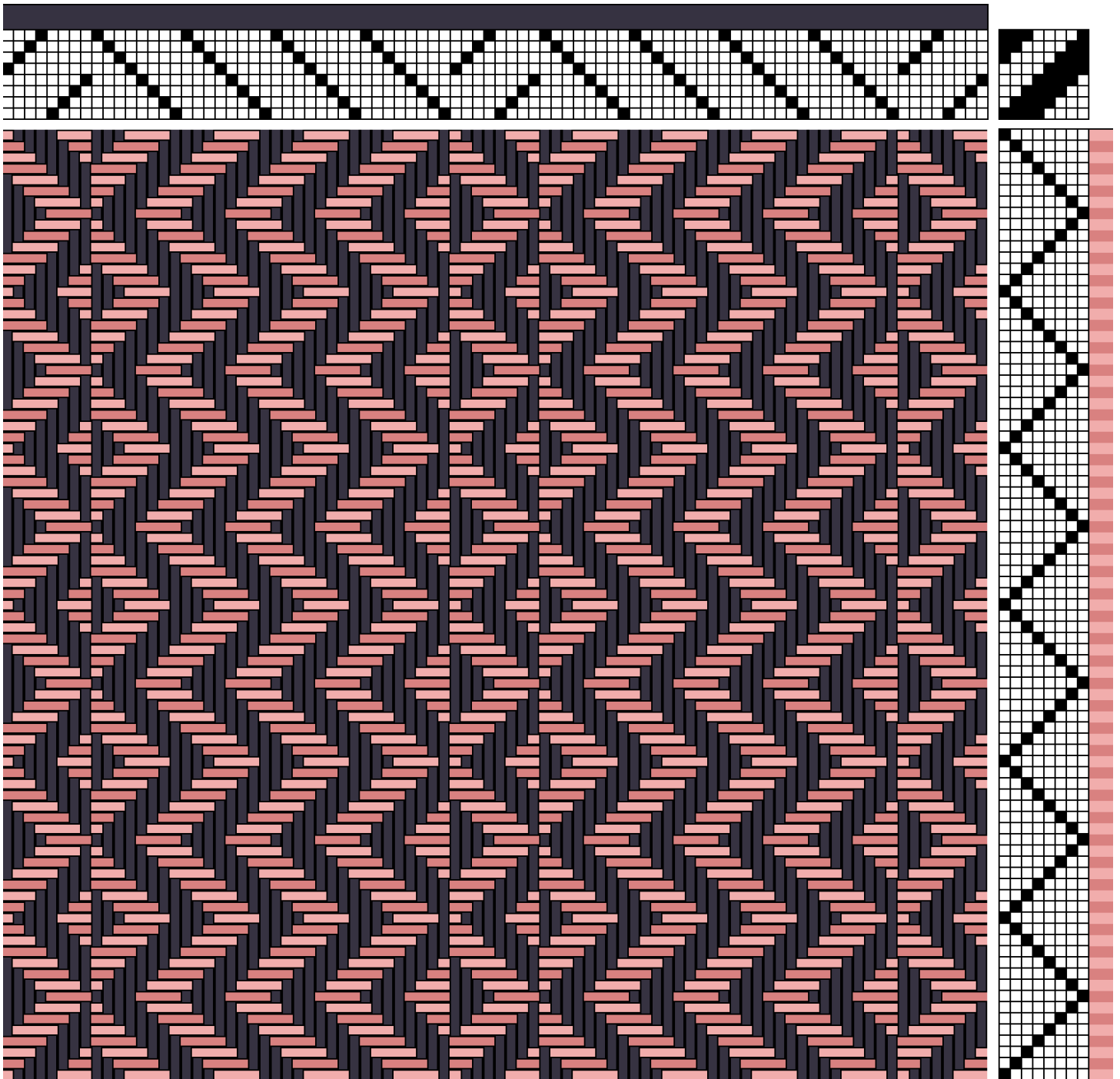
Cotton Dish Towel

Structure: 8-shaft herringbone twill, regular 4/4 tie-up.

Warp: Brassard 8/2 cotton, marine; 24 epi.

Draft Source: Carol Strickler, ed. (1991) *A Weaver's Book of 8-Shaft Patterns: From the Friends of Handwoven*. #192 by Dianne Ney Totten, p. 48, with small variations.

Weft: Henry's Attic 8/2 cotton, hand dyed in pink and salmon. Alternating weft colors; 24 ppi.





Sharon Schenna

Table Runner

Structure: 8-shaft turned twill blocks.

Draft Source: Adapted from Jean Sparkes (2013) Autumn Fire Runner. Handwoven (Nov./Dec.), p.32-33.

Warp: 8/2 unmercerized cotton, white, black, rust, tan; 20 epi.

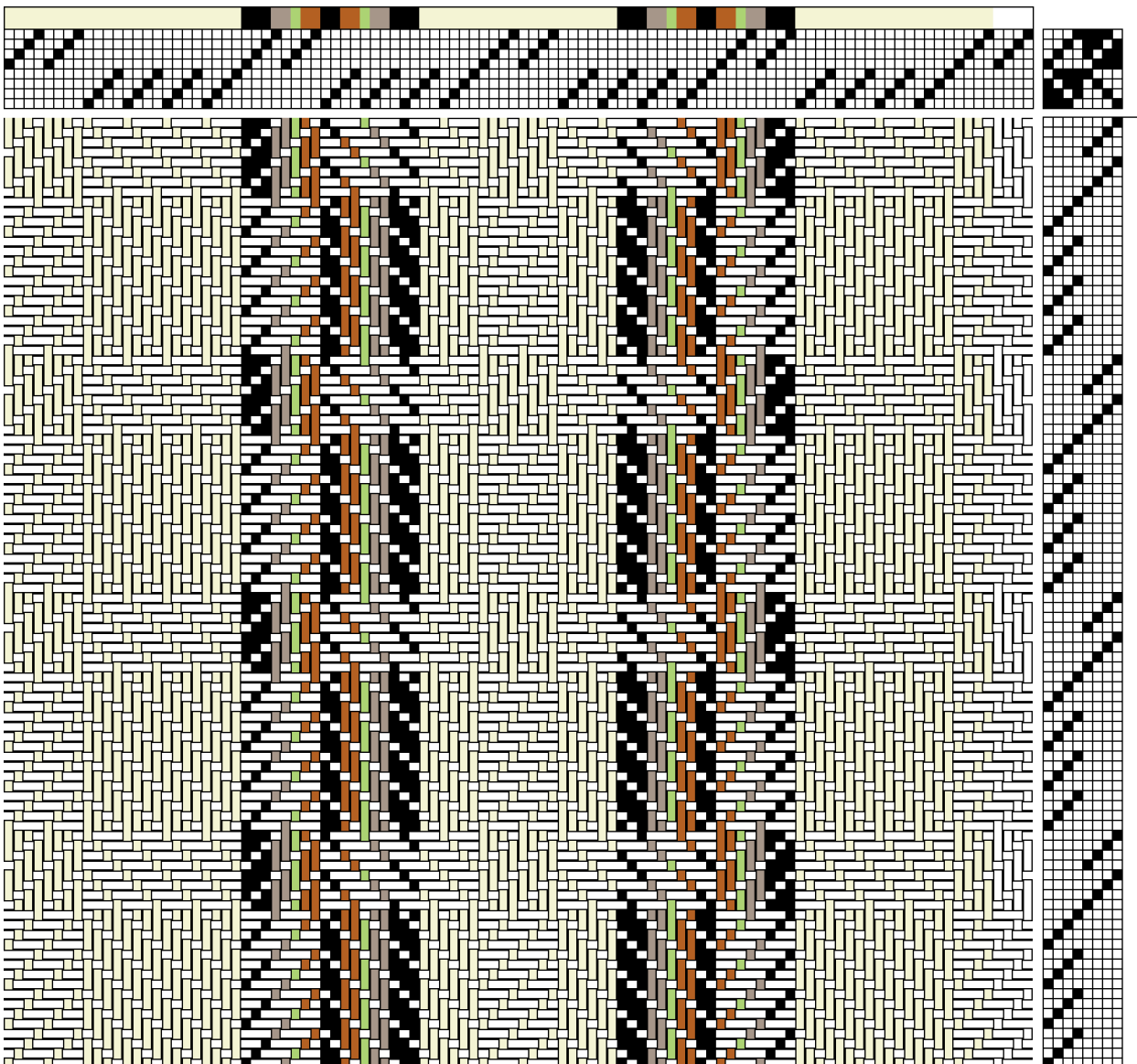
Weft: 8/2 Tencel, white; 20 ppi.

Warp Stripe Color Order

3 black, 2 tan, 1 light green, 2 rust, 2 black,
2 rust, 1 light green, 2 tan, 3 black



Below, Representative section of threading draft. The white warp is shown slightly darker for ease of interpreting the draft.





Sharon Schenna Shawl

Structure: 4-shaft extended twill, regular 2/2 twill tie-up.

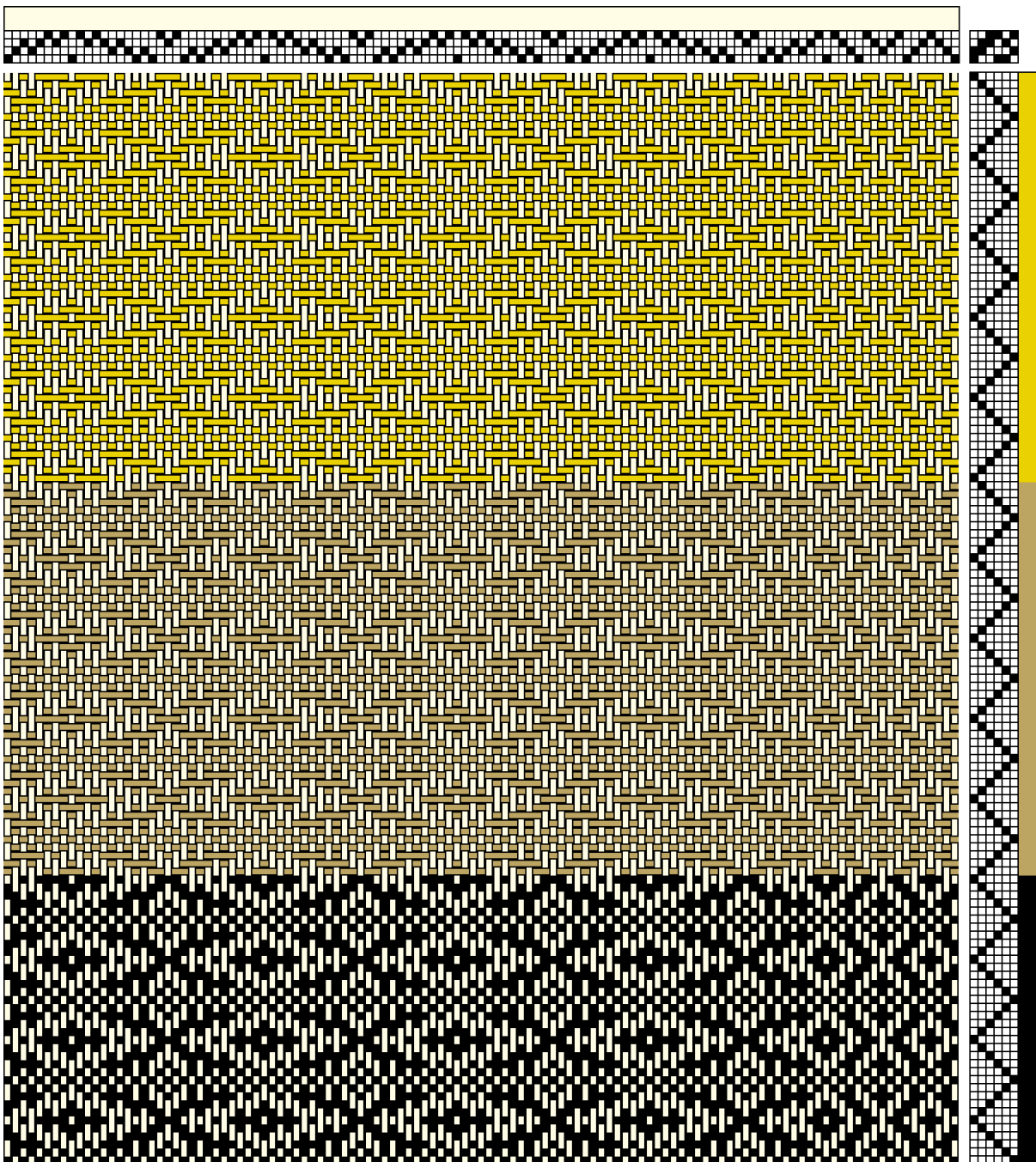
Draft Source: Adapted from Cynthia Cox (2022) Gold Rush Shawl. Handwoven (May/June), p. 53-54.

Warp: 5/2 Bamboo, cream; 12 epi.

Weft: 5/2 Bamboo, cream, gold, tan, black; 12 ppi.



Below, Portion of threading draft.





Credits

The PVW guild exhibit was coordinated by Lynn Field, with help from Laurie Autio.

The notebook and labels were made by Laurie Autio.

The draft of the PVW logo was designed in 24-shaft Atwater-Bronson Lace (Lace Bronson) by Laurie Autio and later woven by Barbara Elkins.